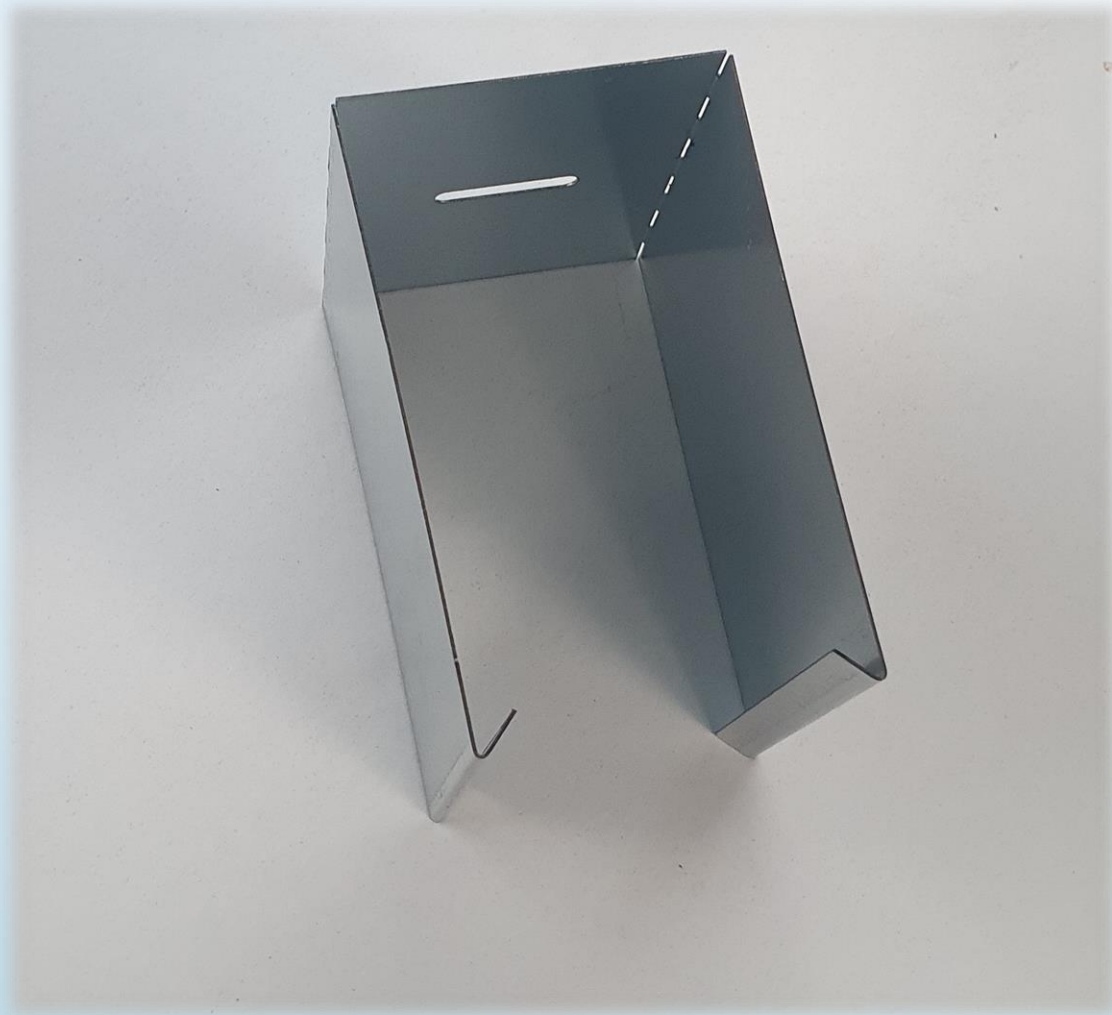


The logo features a white outline of a house roof above the word "Hough" in a white, serif font.

**Hough**

**Head Track Clip (HTC)**



**The HTC is shaped to allow head sections along with deflection detail to be inserted for an easier installation. There is a perforated edge located at the top to allow for a clean and easy removal of side flanges to help with fire regulations, there is also a small area on top of the clip to allow for fixing.**



- Fix HTC in place.



- Bend and Insert head section into HTC.



- Secure head section in place.



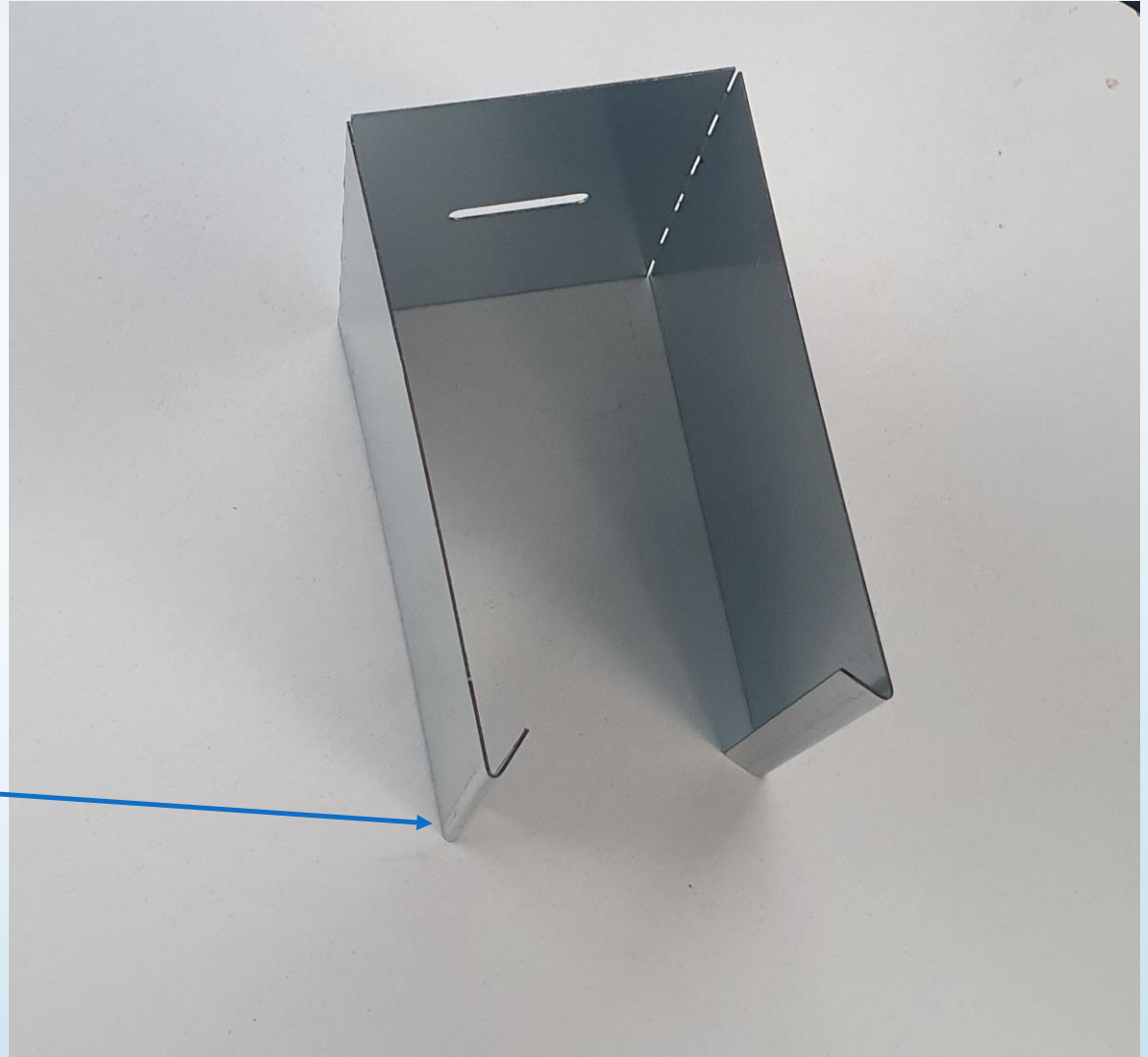
- Remove HTC sides easily.



The HTC has been designed to sit perfectly over Metal Track allowing the installer to fix the Track to the soffit with ease and minimize the chance of injury and errors when setting out.



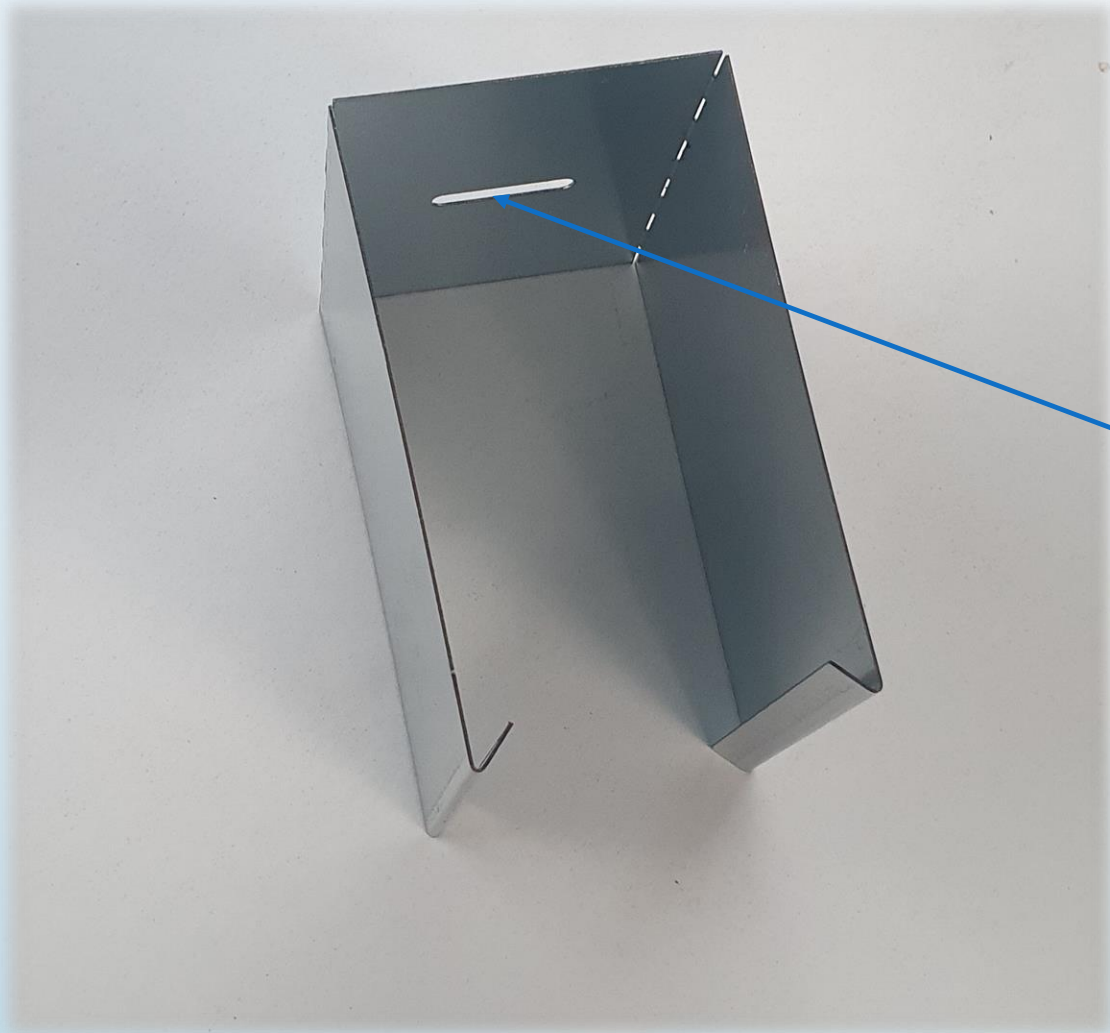
The bottom edge of the HTC has a return to allow for the Metal Track to be held prior to fixing.





**The Metal Track can be easily adjusted back and forth to suit set out marks whilst sitting in the HTC prior to being fixed to required location.**



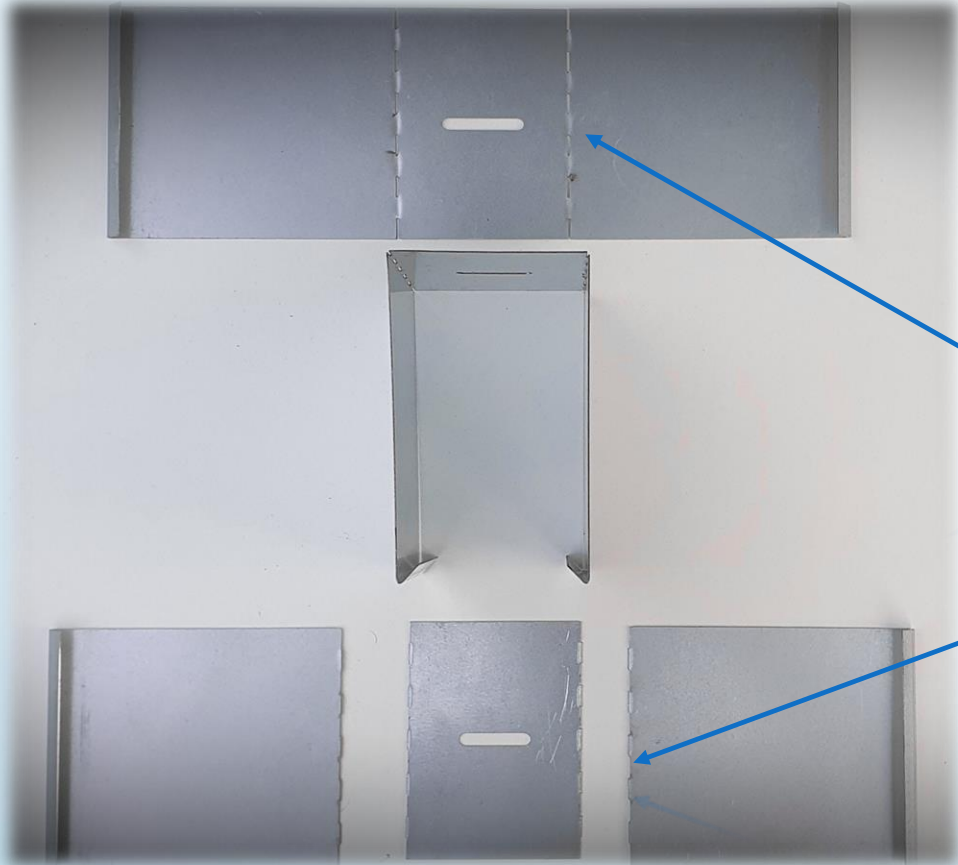


**A Small hole on top of the HTC has been added to allow for fixing to be easier and to allow room for slight adjustments once fixed if necessary.**

Once the head section is securely fixed in place the HTC side flanges are no longer needed and are easily removed.



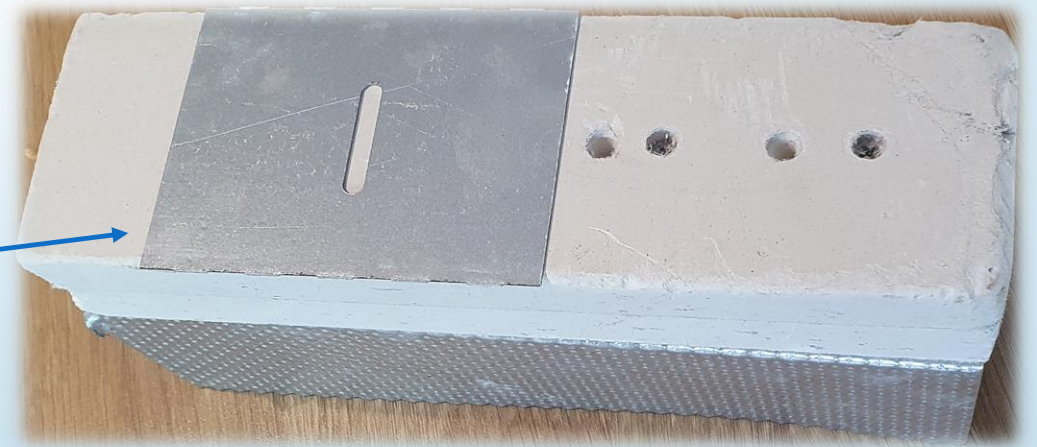




**The Perforated edge along the top of the HTC allows the installer to remove the side flanges with ease by bending back and forth.**



After side flanges have been removed there is no sign of the HTC being there.





Installation without HTC



Installation with HTC





The HTC will assist members of the construction industry and allow the installers of internal and external walling systems to easily install head sections to the soffit, this will be achieved a lot easier with the help of the HTC by removing the need to hold lengths of track at a specific location before fixing.

In these images we see how and where operatives install SFS head sections at height without the help of the HTC.



# Falling Objects

The majority of injuries from falling objects happen on construction sites. In fact, fallen debris is a leading cause of construction injuries.

## Construction Site Safety Standards

Construction sites have certain safety standards that, if not followed, can result in someone being struck by tools or debris falling from a high place. Indeed, construction industry safety standards are in place specifically to prevent these and other injuries. The law requires construction companies, contractors, and workers to take measures to prevent foreseeable harm.

Common Mistakes That Can Cause Injury from Falling Objects when workers don't take proper measures to prevent tools, materials or debris from falling from a high place can be caused by the following:

Failure to secure tools, equipment and materials

Failure to inspect hooks, chains, or other means of securing equipment.

Barricades placed too close to dangerous areas.

Failure to enforce the use of hard hats and other safety equipment.

Passersby can easily become injured if construction companies don't effectively reduce risks.



# Locations affect installation



Distance to public footpath



Distance when working internally

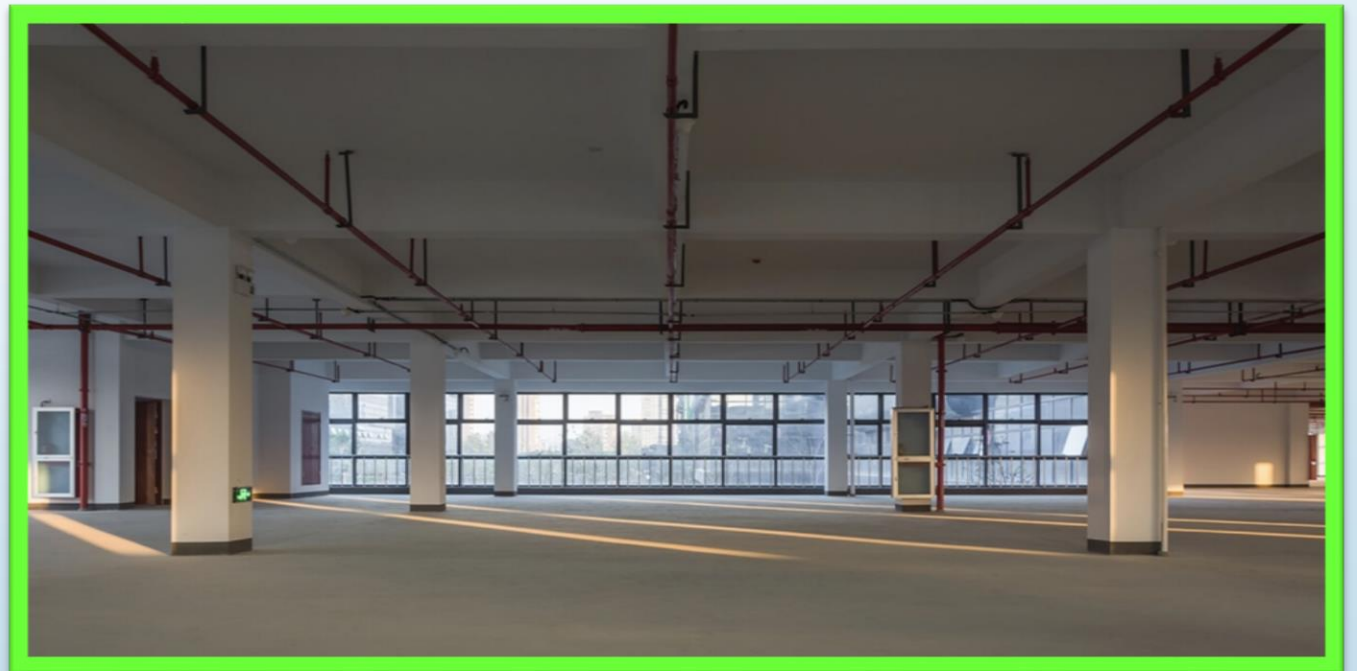


Distance when working externally

Example of an area where walls are expected to be set out and installed.



Example of an area where HTC's could be installed before materials and other trades arrive.





## *Advantages of the HTC:*

- **Manual Handling Reduced considerably when installing Track.**
- **Reduced cost due to less room for error with measurements and less need for more operatives to help install Track.**
- **Areas can be set out prior to installing metal track by a single operative to allow for other trades to continue there work before partitions have been installed.**
- **Reduced chance of injury caused by Track falling during installation.**
- **Faster and more efficient installation.**

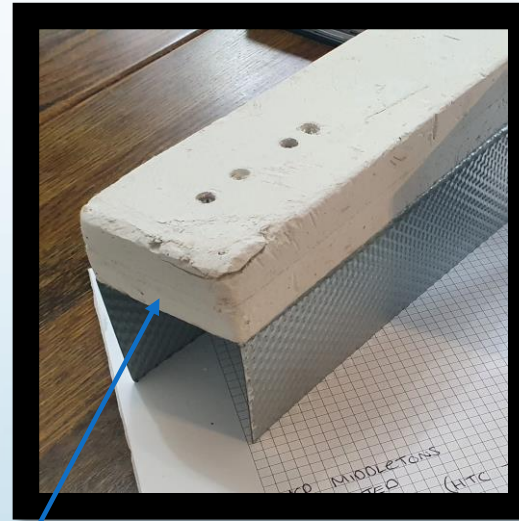
## Head Section ready to be installed after setting out Floor Track

Over the past decade the construction industry has been drastically improved by creating more ways to prevent and contain fire.

In previous years metal track was installed with very little if any deflection detail. But as the years have passed and regulations have become more present within the construction industry there is now a need for boarding or something similar to be fixed to the top of the track as a Deflection Detail (as seen in images).

This now means that unlike previous years metal track can no longer be installed by one operative and is still difficult with two. In some cases, several operatives are needed to install one length of track especially on external SFS and larger internal walling.

With the HTC this process will almost guarantee a third operative will never be needed.



Deflection Detail



SFS Slotted Head Section



**Arthur Hough & Sons Limited**

Hilton Cross Business Park ,  
Cannock Road,  
Featherstone,  
Wolverhampton,  
West Midlands,  
WV10 7QZ

**Contact**

Admin Tel: +44 (0)1902 867717  
Sales Tel: +44 (0)1902 867718  
Fax: 01902 867719  
Email: [sales@ahough.com](mailto:sales@ahough.com)  
[www.ahough.com](http://www.ahough.com)